



tecniche nuove
www.tecnichenuove.com

The editor of this magazine
will welcome you at
Hall 9 Level 1 Booth FOY07.

Italian innovation



HYDROTHERMAL SYSTEMS
COMPARATO[®]
50 YEARS OF EXCELLENCE
MADE IN ITALY

HALL 9.1 STAND C82



GT
il Giornale del termoidraulico

Heating  Air conditioning  Plumbing 



RGT
RISCALDAMENTO
CLIMATIZZAZIONE
IDRONICA



BUSINESS IDEAS 2019

for installers and engineers



In this issue, you will find a review of innovative products proposed by Italian companies. This magazine is an important "tool" that should be retained for future reference: in an increasingly competitive world, to be updated and propose new solutions to its customers, can make a difference for acquiring new orders.

Companies that have joined our initiative



Tecniche Nuove holding: than half-century of successful communication

Founded in 1964 by Giuseppe Nardella, its core mission was to spread professional information, at first just in the mechanics industry. Over time, it grew and expanded its influence and expertise in other Italian industrial sectors, and now covers just about every production sector in the country. The day-to-day management of the company is in the hands of Giuseppe's son, Ivo Nardella, proof of the continued solidity of the firm. In June of

2014, the company could boast fifty years of continued operations, an important benchmark that was celebrated with the inauguration of a new headquarters, a fifteen-storey tower expansion of the "old" headquarters on Via Eritrea, in the northern regions of Milan. A building with nine thousand square metres of space, the culmination of a 13 million euro investment. The Tecniche Nuove portfolio, which also includes New Business Media,

is comprised of more than 120 magazines - specialised publications - for a total run of 650,800 printed copies per month, online editions with a reach of 1,690,250 readers, 600,000 monthly newsletters, a catalogue of 800 books and 35 specialised series. The company is furthermore active in the continuing education industry and organises trade fairs and conferences. These impressive numbers belongs to a business that is not limited to

Italy, but that touch international markets as well. Markets that range from nearby Italian Switzerland with Ticino Edizioni and a company that organises fairs and shows, to China (where the firm publishes 3 Chinese magazines on design, air conditioning and architecture), Brazil (magazine on agriculture, dentistry, sports). Tecniche Nuove Group with a staff of 500 employees is the absolute leader of professional information in Italy.

STOP TO LEGIONELLA IN THE CONDOMINIUMS, IN THE HOTELS AND IN THE SOCIAL-HEALTH FACILITIES

WOULD YOU LIKE TO MAKE YOUR LEGIONELLA PREVENTION SOLUTIONS KNOWN? BECOME A SPONSOR OF THE CONFERENCE!

29 May 2019 - Rome (Italy)

Hotel Massimo D'Azeglio a few steps from Termini Station.

After the high interest shown for the 2018 edition, and the numerous cases of Legionella in the last few months, we thought to present a second

edition in Rome based on the considerable concentration of hotels, social-health facilities and condominiums. Among the focuses, the correct design of the

plants, the compliance with the requirements and the adoption of adequate maintenance and disinfection procedures to counteract the proliferation and spread of the bacterium. The event - organized by RCI, Hotel Domani, Tecnica Ospedaliera and Ambiente & Sicurezza magazines - is dedicated to designers/engineers, installers and plants maintenance technicians, condominium

administrators, technical managers of hotels, hospitals, clinics and retirement homes, facility managers, Health and Safety Officers, etc ... The conference will be attended by many experts of the theme who will address the topic under the health, regulatory, planning, management and legal aspects, even through the presentation of significant case studies.



ISH

Frankfurt am Main
11. – 15. 3. 2019 (NEW: Monday – Friday)

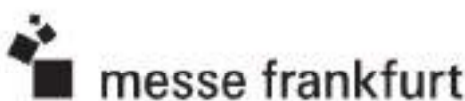
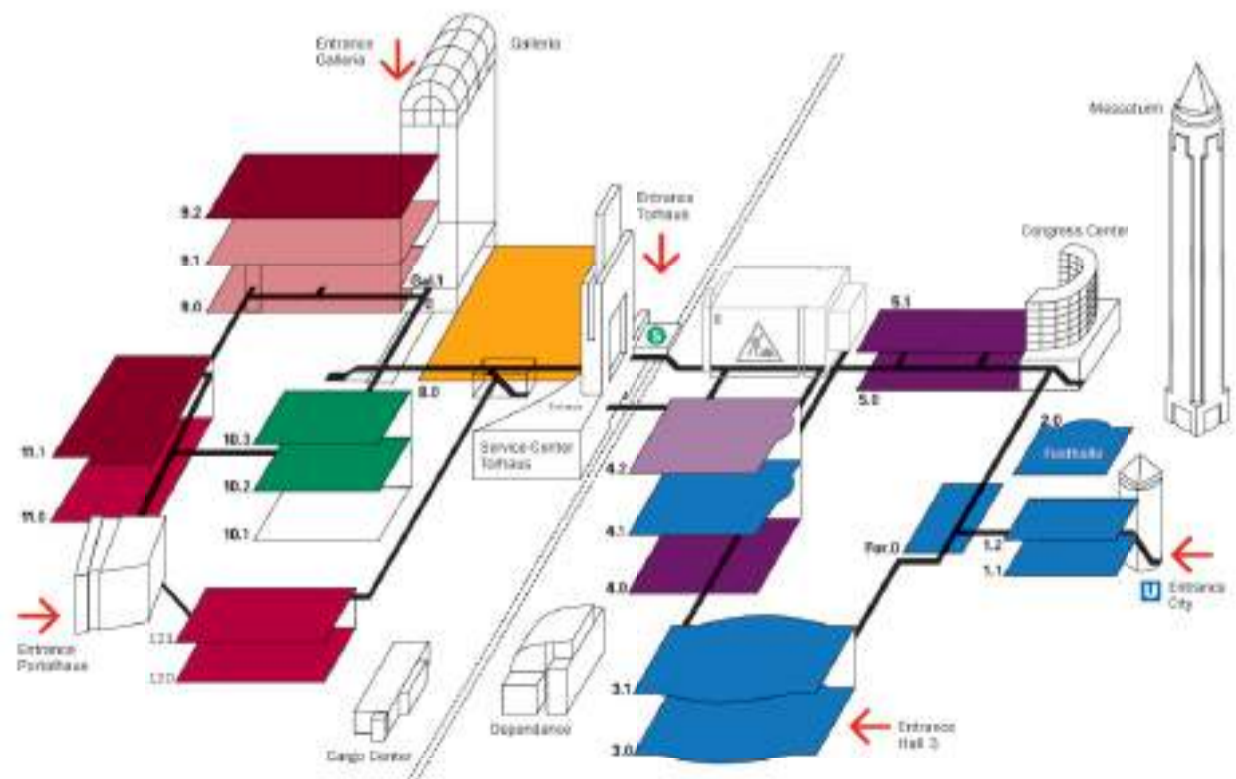
Tecniche Nuove will welcome you at **Hall 9 Level 1 Booth FOY07**

Energy

- Heat generation, heating systems, heat transfer ■ Halls 11.0, 12.0, 12.1
- Heating with wood-exhaust technology ■ Hall 9.2, 11.1
- Heat distribution: pumps, expansion vessels ■ Hall 9.0, 9.1
- Refrigeration, air-conditioning and ventilation technology ■ Hall 8.0
- Home & building automation, measurement and control technology ■ Hall 10.2, 10.3

Water

- The Bathroom Experience ■ Halls 1.1, 1.2, 2.0, 3.0, 3.1, 4.1, forum
- Installation technology ■ Halls 4.0, 5.0, 5.1
- Tools, mounting material ■ Hall 4.2



Italian innovation

Heating  Air conditioning  Plumbing 

IN THIS ISSUE

- 3 COMPARATO NELLO
"SMART" HEATING AND COOLING
- 4 B METERS
DIGITAL SMART METER FOR WATER UTILITIES
- 6 IVAR
MULTIFUNCTION MAGNETIC DIRT SEPARATOR
- 8 MAXA AIR CONDITIONING
AN EFFICIENT INVERTER, TWO SCROLL COMPRESSORS
- 10 LIRA
MORE SPACE UNDER THE WASHBASIN
- 12 FACOT CHEMICALS
SAFE, CLEAN AND CHEAP SEALING TAPE
- 14 MUT MECCANICA TOVO
BALL ZONE VALVES WITH "ABS" AS STANDARD
- 16 EFFEBI
MODULAR SANITARY MANIFOLDS
- 18 GIANNESCHI PUMPS
A WIDE RANGE OF SELF-PRIMING ELECTRIC PUMPS
- 18 TF INOX
WATER HEATERS AND CALORIFIERS
IN STAINLESS STEEL AISI 316L
- 20 FERROLI
HEAT PUMPS FOR RENEWABLE ENERGY PLANTS
- 22 CORDIVARI
ECO-SUSTAINABLE CALORIFIERS
WITH INTEGRATED HEAT PUMP
- 25 CEMBRE
HIGH PERFORMING RANGE OF HYDRAULIC TOOLS
- 26 FAR RUBINETTERIE
PISTON VALVES FOR FAN COILS
- 27 G. GIOANOLA
WATER METER WITH WIRELESS RADIO MODULE
- 28 FRANKLIN ELECTRIC
CENTRIFUGAL PUMPS WITH AXIAL SUCTION
- 29 PROGRESS PROFILES
AESTHETICS AND FUNCTIONALITY FOR
THE FLOOR-FLUSH SHOWER
- 30 PENTAIR STA-RITE
DIGITAL PRESSURE SWITCH
- 31 F. A. R.G.
BALL-OPERATED FLOAT VALVE

Supplement of issue #3
March 2019 of GT il Giornale del Termoidraulico

Head office, editorial office, subscriptions:
Administration and advertising:
Publishing firm:
© tecniche nuove spa
Via Entres, 21 - 20157 Milano - Italy

Publisher: Ivo Alfonso Nardella

Editorial direction: Marco Cardinelli - Tel. +39 02 39090358
marco.cardinelli@tecniche nuove.com
Editorial staff: Sara Checchia - Tel. +39 02 39090341
sara.checchia@tecniche nuove.com

Sales manager: Cesare Grocchi
cesare.grocchi@tecniche nuove.com

Printing and advertising coordination:
Fabrizio Lubner (coordinator)
Debora Malatino - Tel. +39 02 39090263
debora.malatino@tecniche nuove.com

Subscription Department:
Giuseppe Carlucci (coordinator)
giuseppe.carlucci@tecniche nuove.com
Alessandra Collagione
alessandra.collagione@tecniche nuove.com
Domenica Sarracino
domenica.sarracino@tecniche nuove.com
Tel. +39 02 39090440 - Fax +39 02 39090335 -
abbonamenti@tecniche nuove.com

Subscription:
Annual subscription in Italy 20,00€
Foreign annual digital subscription 20,00€
Subscriptions become active from first available issue after
payment receipt.

Graphics, drawings and layout:
Grafica Quadrifoglio srl - Milano

Printing:
Rotolo S.p.A. - Piacenza (PR)

Reproduction of responsibility: Reproduction of illustrations
and articles published in this magazine, as well as their
translation, is reserved and forbidden without the express
authorisation of the Publishing Company. The manuscripts and
illustrations sent to the editorial office cannot be returned,
even when unrequested, and the Publishing House disclaims all
liability in the event of these illustrations are unique specimens.
The Publishing House disclaims all liability in the event of any
error in the published articles or any error occurred during
reproduction in the magazine.

ANES ASSOCIATION OF NEWSPAPERS

Registration n. 226 of 26/4/1986 - Tribunale di Milano - Iscritta
al ROC Registro degli Operatori di Comunicazione al n° 649
delibera 236/04/Cons del 30.6.00 del Ministero per le Garanzie
nelle Comunicazioni.

CSST

"Smart" heating and cooling



HALL 9
LEVEL 1 / BOOTH C82

Sintesi Smart with ModBus

Sintesi Smart by Comparato is an actuator with voltage or current proportional control dedicated to modern heating and cooling systems: thanks to its "smart" heart, it is used in all applications that require a mixing or partitioning of the flow. Sintesi Smart expands with the new version that communicates via Modbus RTU, allowing the rapid integration into the building automation systems. It is able to receive commands and settings of the operating parameters in an easy way, ensuring a total and reliable control of the valve. Other communication protocols are available on demand. Available with 12-24 V AC/DC and 230 V AC power supply in combination with 2-way, 3-way 1/2", 3/4", 1" valve bodies and version with ISO 5211 adapter. Sintesi Smart can also be combined with the modern PICV valves, with flow control independent from pressure. All the Sintesi Smart technology has also been transferred to the new Smart PRO range, the Comparato series suitable for industrial uses, as well as civil and HVAC-R applications, and enriched by new functions: wireless communication and control via Wi-Fi, back-up fail-safe battery, multi-voltage and variability in manoeuvring times.

FOR MORE THAN 50 YEARS COMPARATO HAS BEEN WORKING IN THE THERMOHYDRAULICS FIELD. THE EXPERIENCE IT GAINED HAS ALLOWED IT TO REACH IMPORTANT MILESTONES THANKS TO THE INNOVATION THAT ITS PRODUCTS HAVE INTRODUCED IN THE SECTOR. IN PARTICULAR, WE CAN REFER TO TWO PRODUCTS, WHICH REPRESENT A REFERENCE FOR THE HVAC-R WORLD: THE SINTESI SMART MODBUS ACTUATOR AND THE MIXING THERMOREGULATING VALVES OF THE PR RANGE.



SINTESI SMART controlled by Modbus RTU protocol and coupled with PICV valve.



DIAMIX PR, for the total management of radiant panel systems.

PR range for radiant systems

The ever-increasing diffusion of radiant panel heating systems has led Comparato to develop a specific motorized electronic valve for the regulation of the outlet temperature. It fully complies with all the system requirements and operates through modulating control according to a PID algorithm; this system guarantees the highest regulation efficiency. It is available in the Diamix PR and Compamix PR models. It allows controlling temperature with

extreme precision, with fixed point or climatic regulation, using it for both heating and cooling. New function: in addition to optimizing all the functions of the actuator, Comparato has paid particular attention to the cooling. In this case, in fact, up to now, it was possible to control the minimum flow temperature to avoid the forming of condensation on the floor, but the evolution of the range envisages exceeding this threshold, thanks to the function of dehumidification management system.

Digital smart meter for water utilities

SPECIALIZED IN THE DEVELOPMENT AND PRODUCTION OF TOOLS AND SOLUTIONS FOR CONSUMPTIONS MEASUREMENT, B METERS HAS EXTENDED ITS RANGE OF METERS WITH THE GSD-TX DIGITAL SMART METER FOR WATER UTILITIES.

FULL RANGE of water and thermal energy meters ready for remote reading.



NEW DIGITAL smart water meter mod. GSD-TX.



Impossible to be magnetically defrauded, the new GSD-TX device by B Meters differs from the typical mechanical meters for its innovative inductive transmission turbine, for its wireless ready electronics, which ensure an accuracy range of up to R400 and the remote data reading through WMBus or LoRa. This smart meter is available with diameters of 15 and 20 mm in the version for cold water up to 50 °C and hot water up to 90 °C. The turbine makes it possible to install the device in any position: horizontal, vertical and even upside-down. Suitable for the most advanced solutions of divisional accounting in private ambit, and for the most demanding Water Utility.

IoT ready consumptions metering

B Meters has also developed the LPWAN range of compact modules, which makes the company products IoT ready. All the families of multi-jet meters, meters

with wet, dry dial, with protected rolls and Woltmann for large utilities are now arranged for data transmission with LoRa & NB-IoT technology. The communication modules are directly connectable to the counter body, ensuring a reduction in installation costs and times compared to wired solutions.

Multi-jet meters

The families of multi-jet meters, GMB model with wet dial and GMDM model with dry dial, are now equipped with inductive predisposition that will allow, using the same meter, to choose among 3 types of data transmission modules, directly installable on the meter cap itself.

1. A pulse emission module, insensitive to external magnetic conditioning, able to do incremental, decremental, absolute counts, doser function and alarms management.
2. A wired M-Bus module, compliant with EN13757-3 specifications.



3. A radio module, that can be supplied with a Wireless M-BUS transmission protocol conforming to the OMS specifications, with LoRa transmission protocol, or with NB-IoT transmission module.

Woltmann meters

The same type of arrangement is

available also on the new family of Woltmann flanged meters, WDE-K50 model which, like the previous ones, will allow the integrated mounting to the cap meter of pulse emission modules and radio modules with the same technical and operating features previously described.

© ALL RIGHTS RESERVED

AVAILABLE transmission protocols.

TECHNICAL FEATURES

- Up to R400-H and R200-V accuracy
- R160 version suitable for any installation position
- For cold 0-50 °C and hot water 30-90 °C
- Turbine reading through inductive system
- Direct reading on 8 digits LCD display
- Consumptions historical archive
- Alarms (reverse flow, losses...)
- 360° rotating digital dial
- Impossible to fraud magnetically
- Integrated WMBUS system
- On request equipped with LoRa module
- Connectable to a PC via IR IEC 62056-21 probe



WATER &

THERMAL ENERGY

under your control



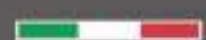
AMR Residential
& Commercial
water meters



AMR
Industrial / Bulk
water meters



AMR
Thermal energy
BTU meters



HALL 5
LEVEL 0 / BOOTH B20

Multifunction magnetic dirt separator

IVAR PRESENTS DIRTSTOP® XL TRIPLE ACTION, THE MULTIFUNCTIONAL MAGNETIC DIRT SEPARATOR, WITH A TRIPLE SEQUENTIAL FILTERING ACTION.

Dirtstop XL

Dirtstop XL combines an effective separation of debris by centrifugal action with a double filtration step, first magnetic and then mechanical. The special internal insert is in fact designed to give the fluid a centrifugal movement, in order to foster a first important purification upstream of the action of the powerful magnet (14,000 gauss), of the 500 µm first passage filtering cartridge and the 800 µm maintenance one to filter even the smallest particles. Dirtstop XL is suitable for installation in any plant configuration: it can be installed in horizontal, vertical and oblique position thanks to the swivelling connector and the locking nut that connects it to the pipe. The device is equipped with a manual air vent valve and drainage valve, with a large settling chamber that reduces the purge frequency. Finally, Dirtstop XL offers the possibility of being used as

an access point for the introduction into the circuit of chemical additives to protect the plant from corrosion and deposits: IV 400 cleaner additive, IV 100 HT inhibitor for high temperature and IV 100 LT inhibitor for low temperature systems.

Dirtstop: perfect in small spaces

Designed for an easy installation under the boiler, even in particularly small spaces, horizontally or vertically, the dirt separator Dirtstop is realized with an IXEF® body; a techno polymer that guarantees high mechanical and thermal performances, as well as lightness and corrosion resistance. Dirtstop is the compact magnetic dirt separator, designed by IVAR, essential for those who want to increase the life of their boiler, improving thermal exchanges and overall efficiency of the system,

DIRTSTOP XL Triple Action, multifunctional magnetic dirt separator, with a triple sequential filtering action.



DIRTSTOP is a magnetic compact dirt separator, easy to install under the boiler in small spaces.



ensuring protection against corrosion and a constant cleaning of pipes and terminals. Designed for an easy installation under the boiler, even in particularly small spaces, horizontally or vertically, the dirt separator

Dirtstop is realized with an IXEF body; a techno polymer that guarantees high mechanical and thermal performances, as well as lightness and corrosion resistance.

© ALL RIGHTS RESERVED

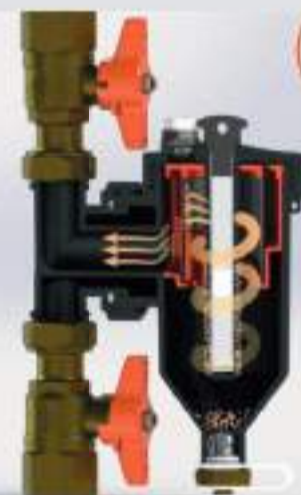
DIRTSTOP XL: TRIPLE FILTERING ACTION



1 Cyclonic action to promote debris separation and settling

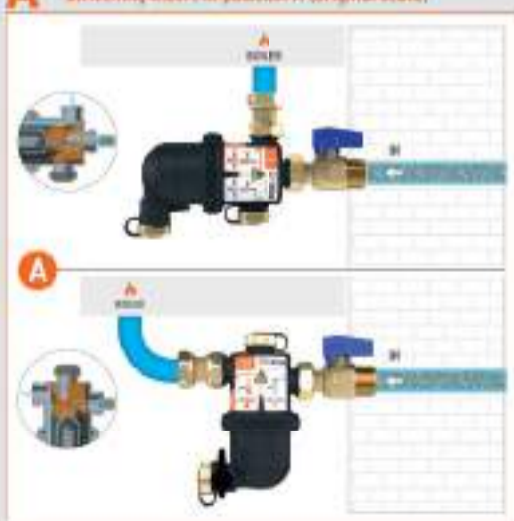


2 Powerful magnet (14000 gauss)

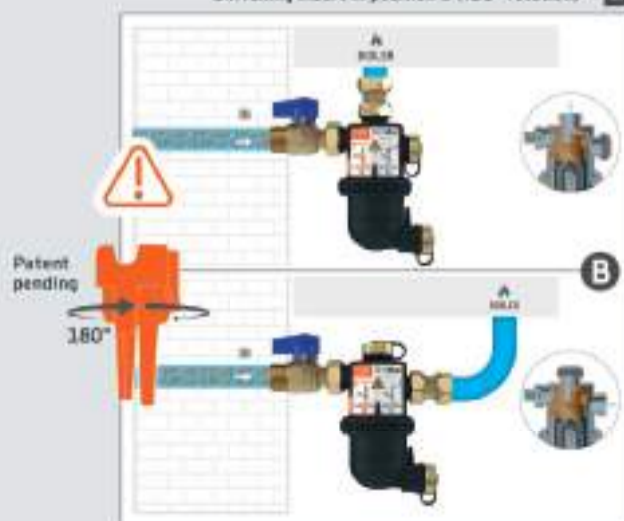


3 Filtering cartridge for the removal of small debris

A Swivelling insert in position A (original state)



Swivelling insert in position B (180° rotation)



B FILTRATION IN FOUR CONFIGURATIONS

What makes Dirtstop unique is the perfect fluid filtration in all 4 possible installation configurations, always ensuring perfect operation of the device. This feature is made possible thanks to the swivelling insert (patent pending), which can be rotated according to the installation needs, forcing the passage of water inside the filter with the consequent isolation of impurities.

THE 4 possible installation configurations thanks to the swivelling insert.



VISIT US AT

ISH

11-15/03/2019

Pad. 5.0 - Stand B20

Dirtstop[®]

The **NEW** underboiler magnetic dirt separator

THE ONLY ONE:

- 1** with **BODY IN IXEF[®] TECHNOPOLYMER**: extraordinary mechanical features, comparable to those of brass.
- 2** with **WIDE 360° SWIVELING** settling chamber, for an **easy and quick cleaning** even when the system is working
- 3** with **PERFECT and GUARANTEED filtration** in all **4 installation positions** thanks to the swiveling insert

MAXA
AIR CONDITIONING

HALL 11

LEVEL 0 / BOOTH A51

An efficient inverter, two scroll compressors

VERSATILITY, POSSIBILITY OF PARTIALIZATION OF THE THERMAL CAPACITY AND REDUCTION OF THE RELATIVE CONSUMPTIONS ARE THE STRENGTH OF THE HEAT PUMP PROPOSED BY MAXA.

The i-HP heat pump 250F version, air/water inverter with axial fans, presented by Maxa, is ideal for both residential and commercial of large dimensions installations with radiant systems or fan coils, whether they are centralized or not such as big houses, buildings, offices or shops. The series i-HP is a family of high efficient heat pumps, designed to reach high values of SEER and SCOP thanks

to DC inverter scroll compressors, EC fans and high-efficiency heat exchangers. It has been designed for various installations, both in combination with fan coils and radiant systems, both for standard operating conditions and for industrial applications. The use of DC inverter scroll compressors, optimized for heat pump functioning under heavy working conditions, integrated with a steam injection system, allows obtaining a high level of comfort with low energy consumption even in the coldest winter seasons (up to -25 °C). With this type of appliance, it is also possible to produce hot water up to 60 °C even with low external temperatures. The EC technology at the base of the fan motor allows up to 90% efficiency and allows high levels of energy savings, significantly extending its life and making it almost maintenance-free.



V.415 CONTROL for a quick maintenance with parameters and firmware upgrade through USB device.



THERMO-ACOUSTIC insulation: the innovative cover allows a noise reduction up to 10%.



EC CIRCULATION pumps ensures very high efficiency and a very low consumption of electricity.



5. REVERSIBLE Inverter i-HP heat pump 250F version.



Versatility and reduced consumptions

The strength of this technology is the versatility of the appliance, the greater possibility of capacity partitioning in both cooling and heating functioning and consequently the reduction of the relative consumptions. Through the control parameters, it is possible to define whether the adjustment should be done in parallel or in sequence, depending on the applications of the machine. The main feature is the connection inside the same refrigeration circuit of two BLDC scroll compressors controlled by high efficiency conversion inverter. One of the exclusive functions is the sliding control of the superheat through the electronic thermostatic valve, thanks to the signals sent by the pressure transducers and temperature probes. In this way, it is possible to optimize the operation of the unit in relation to the external operating conditions and the plant

I-HP 250F VERSION. Full inverter with both inverter compressors, with working range between 30 and 80 Hz with frontal view of the electronics on silenced version.

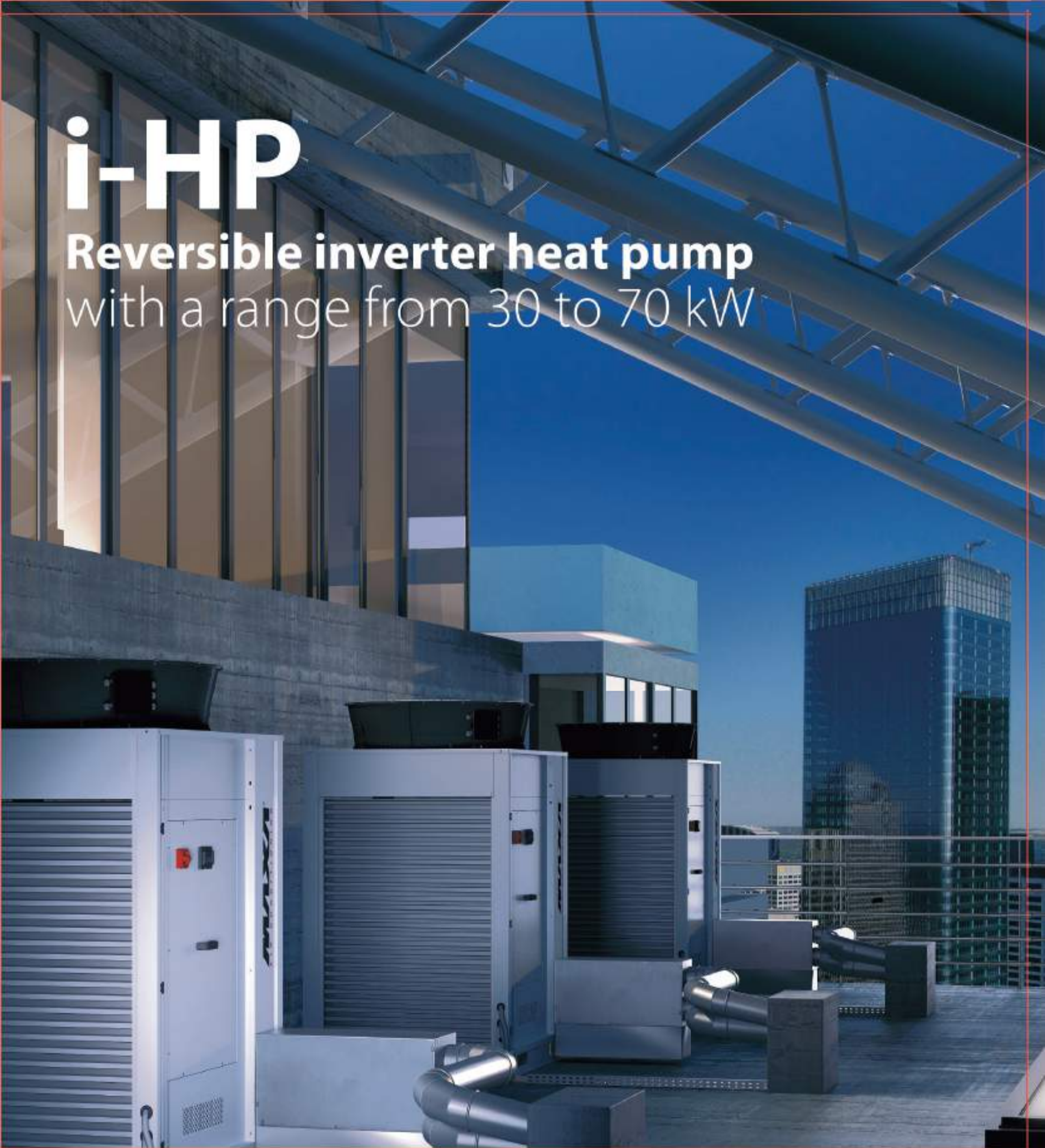
conditions. Similarly, an exclusive defrost control was developed based on the external temperature: in this way, defrosting numbers and durations are reduced during winter functioning, guaranteeing higher continuity in the supply of thermal energy to the system. The CPU also controls the following functions:

- water temperature setting;
- antifreeze protection;
- compressor timing;
- alarm reset, alarm management;
- operation LED.

The control system, together with inverter technology and on-board sensors, constantly and continuously monitors and adjusts the performance of the inverter compressor, the circulator and the fan. The on-board control is also equipped with the following features: optional ModBus port, possibility to download the updated firmware at any time via USB Host port, optional Wi-Fi card.

i-HP

Reversible inverter heat pump
with a range from 30 to 70 kW



- High performance and efficiency with an ESEER of 6.07
- Hot water up to 60°C with low outside temperature

- 30% of Energy saving compared to other products
- With steam injection
- With axial fans


Made in Italy
Heat Pumps



www.maxa.it





HALL 1
LEVEL 1 / BOOTH B02

More space under the washbasin

LIRA PROPOSES A SPACE-SAVING SIPHON THAT, COMBINED WITH THE "BASKET BAGNO BASSA" DRAIN FITTINGS, ENABLES TO OPTIMIZE THE SPACE IN THE BATHROOM.

To allow everyone to make the most of the potential of the furniture below the washbasin, Lira has developed the inspectionable Spazio Bagno NT space-saving siphon that, thanks to its 70 mm of width and 40 mm of thickness, adheres to the back wall occupying very little space. To this siphon with compact dimensions, the Basket Bagno Bassa drain fittings can be combined: with just a 60 mm

encumbrance, which makes it easy the sliding of the drawers, it allows to recover useful space for storing detergents, towels and other items.

Alone or in kit

Both solutions are available both in single pack and in a special kit that simplifies the work of the installer: all components are in fact provided with length compatible with

any application, from the largest washbasin to the smallest one. Being made in polypropylene, it is possible to cut them easily also with a traditional hacksaw.

Particular signs

A special opening in the front part of the siphon allows removing the accumulated residues in the drain, simply unscrewing the closing cap.

The drain instead is equipped with the "No Problem" closing cap, which allows the closure with a simple digital pressure and the opening by lifting of the cap, that has a particular conformation. This avoids annoying stoppage problems in the opening and closing operations. The same cap can be easily removed for cleaning operations.

© ALL RIGHTS RESERVED

STEP BY STEP INSTALLATION



1. AFTER measuring the thickness of the tank, position the drain coupling to the white gasket and insert the screw.

2. FIX the under-drain on which the black gasket must be affixed.

3. TO CLOSE the screw just use a coin.

4. MEASURE the depth of the technical curve to determine how much the siphon outlet tube must be cut.

5. CUT the polypropylene tube, also utilizing a hacksaw. If necessary, use the supplied 32-40 mm diameter adapter.

6. ONCE installed the siphon, measure the length of the curve that connects the drain, then cut it.

7. INSERT the curve, cut in the correct size, into the siphon; measure the length of the final extension.

8. CUT the extension and install it.

9. THE SIPHON installation is completed.

10. THE DRAIN cap is easily removable.

11. THE CLOSING cap of the siphon

allows removing the residues accumulated in the drain, without disassembling anything.

for
HIGH QUALITY
KITCHEN



and BATHROOM

traps & wastes

XLIRA[®]
since 1925
MADE IN ITALY www.lira.com

Valduggia (Vercelli) - ITALY
info@lira.com

ISH

Frankfurt am Main
11. - 15.3.2019
(NEW: Monday - Friday)
Hall 1.1 - B02





HALL 5
LEVEL 1 / BOOTH D62

Safe, clean and cheap sealing tape

FACOT CHEMICALS PROPOSES SILICON SEALING TAPE, A DYNAMIC SEALANT THAT ADAPTS TO ALL THREADS, INCLUDING THE CONICAL AND PARALLEL ONES, ACCORDING TO THE INTERNATIONAL STANDARDS.

After 10 years since the launch of Silicon Sealing Tape - the universal sealant for thermohydraulic fluids, exclusive produced by Facot Chemicals and present in 45 Countries in the world - the Italian company proposes the modern and innovative packaging in the practical and ergonomic dispenser that allows to speed up the sealing operations without wasting one centimetre of product.

Practical and ergonomic dispenser

The new dispenser can be also reused repeatedly replacing the reel like spare parts. The dispenser has also the function to pretension the tape in the correct way so that it penetrates easily in the threads coils. Applicable on all materials making up the fittings and the piping of civil and industrial plants. A finger and a few seconds are enough to make a safe, clean and cheap work.

Safety and benefits

Silicon Sealing Tape complies with all the gas and water regulations and to the technical specifications according to DIN 30660 and according to UNI EN 751/2 Class ARP relative to sealants that allow the repositioning of fittings, and is also WRAS BS 6920, DVGW EN 751-2 and TÜV PROFICERT Product

UNIVERSAL and dynamic for hydraulic fittings
Silicon Sealing Tape is conform to all the gas and water regulations and technical specifications

THE NEW DISPENSER

Just one finger and a few seconds for a safe, clean and cheap job!

1) Wrap the thread only using your forefinger, the tape is already pre-tensioned.

2) Cut the tape pressing with your thumb, pulling slightly.



SUITABLE FOR ALL THREADS

Silicon Sealing Tape is a dynamic sealant and it can be repositioned (the thread can be rotated up to 180 °C unlike the common sealants) and can be used with all metals, including stainless steel and plastic materials including rigid PVC and the most modern polymers in PPSU. Silicon Sealing Tape is made of thermally stabilized synthetic fibre, and is impregnated with a special non-hardening mastic, finally it is resistant up to 160 °C and to 26 bar pressures.

Silicon Sealing Tape is clean and it leaves no traces on the hands, it is cheap and ensures an easy and fast application. It allows the repositioning of the fittings and the disassembly years later. It endures the typical vibrations of joints, influenced by the pumps.

certified. This last certification is a guarantee for the end-user who has the right to report eventual defects to the Entity through appropriate dedicated mail. Silicon Sealing Tape is a patent-protected product in all the world and is a registered trademark by Facot

How to use it

Chemicals. Among the advantages in its use, there is the cheapness in terms of price-performance ratio. Silicon Sealing Tape can be used as a common sealing tape, applying a slight tension on the tape itself without a particular preparation of the fittings. Three simple and clean operations without any waste of material and with minimum consumptions of the product. Only in some rare situations with particularly slippery materials, it becomes necessary to prepare the fillets engraving them with a hacksaw blade. Once the tape is applied, it will be enough to make it adhere well with fingers and then tighten normally the fitting. Once tight the fitting, if necessary, there is the possibility to reposition it orienting at will without any risk of leaks. Among the various fluids circulating in the water drinking and heating plants, glycol water, steam, methane, LPG, alkalis and low concentration acids.

© ALL RIGHTS RESERVED

SILICON SEALING TAPE fits to all the threads including those both of conical type, parallel, and endures the vibrations typical of joints, influenced by pumps.



Ein komplettes Produktsortiment, renommiert für Zuverlässigkeit und Effizienz

Seit über 60 Jahren produziert Facot Chemicals Qualität und trägt durch Forschung, Entwicklung und Leidenschaft dazu bei, die Arbeitsweise von Fachleuten, Einzelpersonen und Unternehmen zu verändern. Dies geschieht durch Produkte und Dienstleistungen mit hohem technischen Gehalt, zuverlässig, mit starker Beachtung des Umweltschutzes und der geltenden technischen Vorschriften. Mehr als 1.500 Produkte in ständiger Entwicklung, immer lieferbereit, auf dem in- und ausländischen Markt in den Bereichen Thermohydraulik, Gas- und Wasserversorgungsnetze, Instandhaltung von Zivil- und Industrieanlagen und Bauwesen. Ein qualifizierter Partner, der in der Lage ist, das umfassendste Angebot an Produkten und Lösungen auf dem Markt zu garantieren, das sich nicht nur durch Qualität, sondern auch durch die Zertifizierungen des deutschen Unternehmens TÜV Proficert Product auszeichnet.

A comprehensive product range renowned for reliability and efficiency

From 60 years, Facot Chemicals manufactures quality and changes the way professionals, individuals and companies work, through research, development, and passion. Such change is possible thanks to reliable products and services with high technological value and utmost respect and protection of the environment and the technical standards in force. Over 1,500 cutting-edge products, always available on stock, distributed on domestic and foreign markets for the following sectors: heating and plumbing, gas and water distribution networks, maintenance of civil and industrial systems, and building industry. A qualified partner able to provide the most comprehensive line on product & solution market, which stands out due to quality and certifications awarded by German TÜV Proficert Product.



Kitte, Dichtungsmassen, Silicone, Füllmittel und Klebstoffe
Seal Pastes, Sealants, Silicones, Fillers and Adhesives



Wasser- und Filtrationsbehandlung, Enthärtungsbehandlung
von Wärme- und Kältemittelsystemen, Additive für Beton
*Water Treatment and Filtration, Softening Treatment HVAC Systems
and Cooling Systems, Additives for Concrete*



Korrosionsschutzbeschichtungen, Isolierbänder, Abdichtung,
Vorisolierter Zweirohr-Reparaturmanschetten für Solaranlagen, Zubehör
*Anticorrosive Coatings, Waterproofing, Insulating Tapes,
Repair Clamps, Pre-insulated twin tube for solar systems, Accessories*



Produktlinie Comfort: Biologische Produkte, Handwaschmittel,
Schwimmbadbehandlung, Produkte für Haushalt, Boot und Auto
*Comfort Line: Biological Products, Hand Washing Products,
Pool Treatments, Household Products, Yachts & Boats
and Car Care Products*



Ball zone valves with "ABS" as standard

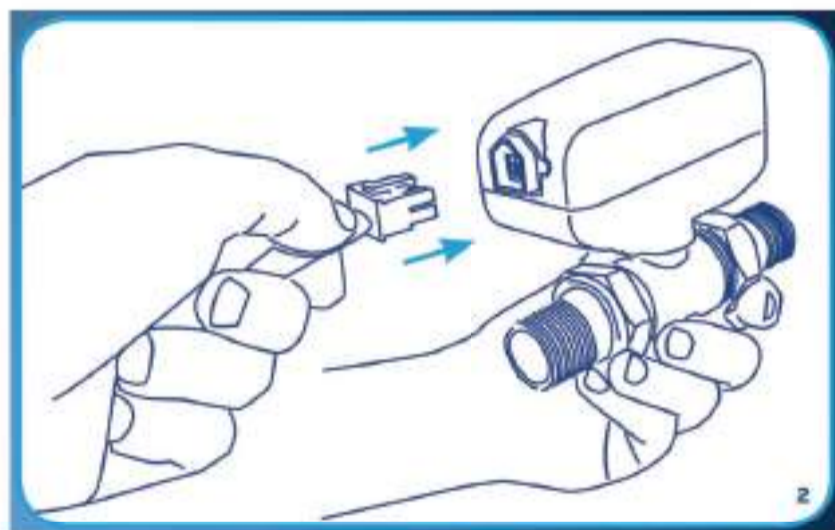
HALL 9
LEVEL 1 / BOOTH D54

THE TMO VALVE PROPOSED BY MUT MECCANICA TOVO IS EQUIPPED WITH THE INTELLIGENT "SMART AUTOMATIC UNLOCK" VALVE ANTI-LOCKING SYSTEM AND OF UNIQUE SOLUTIONS TO SIMPLIFY INSTALLATION AND MAINTENANCE.



14

The 2-way TMO valves studied by MUT for heating and domestic water systems, to control the flow of hot and cold water. Their function is to intercept automatically the flow of fluid. The 3-way TMO versions have in common with the 2-way version the destinations of use, the way of removing the head and the possibility of installing a micro auxiliary switch. They can be connected as diverting valves or mixing valves in centralized heating or cooling systems. Also in this case the sealing of the ways is guaranteed by TEFLON rings combined with technopolymer and O-Ring. The TMO series valves are available with G 1/2", G 3/4" and G 1" threaded connections.



1. THE TMO zone ball valves are available with 2 or 3 ways.

2. TMO VALVES are equipped with standard MOLEX quick connector.



3. THE QUICK connection system allows the servomotor to hook/unhook without disconnecting the valve from the hydraulic circuit.

THE PLUS OF THE TMO VALVES

- "Smart Automatic Unlock" ball anti-locking system.
- MOLEX quick connector, which allows the TMO servomotor to connect/disconnect from the electrical and signal system without having to touch the contacts and the electric cables on the servomotor (available versions at 230 V and 24 V).
- Quick detaching: it allows the servomotor to be detached from the valve body, keeping the valve connected to the hydraulic plant pipes.
- Compactness: the width of only 5 cm allows installation even in recessed boxes with a depth of 8 cm.
- TEFLON ball seals: to avoid jams and allow easy sliding.
- High KVS.
- All versions are available with a bipolar auxiliary microswitch (MIS).

TMO SERIES

**The zone ball valve
with “ABS” system
as standard**



*TMO is equipped with the intelligent system
anti-lock valve “Smart automatic unlock”*

Available with 2 or 3 ways, in many
configurations and dimensions

Available with 230V and 24V power supply

**For heating systems and for
sanitary installations**



**Made in Italy
by MUT**





HALL 9
LEVEL 1 / BOOTH E32

Modular sanitary manifolds

EFFEBI WIDEN THE RANGE OF ITS PRODUCTS WITH THE INTRODUCTION OF COMBI, ASSEMBLED MANIFOLDS DESIGNED FOR SANITARY WATER DISTRIBUTION.

Modular manifold COMBI

The COMBI manifolds can be used for either sanitary water as well as heating systems. They distinguish themselves as they are quick and easy to couple together. The special processing of the threads allows users to achieve a perfectly aligned composition within a range of +/- 8° range and the presence of a seat with an O ring makes it possible to obtain fluid tightness without the use of threads sealant. The patented ergonomic manoeuvring system facilitates the opening and closing operations. The knobs are etched with the opening and closing direction arrows, and they can also house a red or blue indicator that indicates both the use of the manifold (hot/cold water) and the specific utility in use (shower, bath, toilet, sink, washing machine and bidet). The large passage screw-down valves are equipped with EPDM gaskets. All the valves are replaceable. As in the case of all EFFEBI products, the COMBI manifolds also have a patented identification band providing the manufacturing technical specifications whilst guaranteeing product traceability.

- COMBI is an innovative manifold with patented ergonomic design (shut-off valves inclined 30°) which allows an easy and fast manoeuvre.
- Automatic alignment, no sealing tape needed.
- Reversible indicators (blue-red) and utility identification.
- Interchangeable shut-off valves.
- Made in Italy.
- 5 years warranty.



AUTOMATIC ALIGNMENT: thanks to special machining of threads.



EFFEBI COMBI manifolds have green ABS knobs.



SPECIFIC FEATURES

- Version with 30° inclined valves.
- Input size: 3/4".
- Models with 2, 3 and 4 outputs with G 3/4" EK, G 3/4" flat gasket, G 1/2" male connections.
- Interaxis G 3/4" EK 40 mm.
- Male interaxis G 1/2" 35 mm.
- Male flat interaxis G 1/2" 40 mm.
- Languages: Italian, English, French, Spanish, German.
- Automatic alignment, no hemp or sealants needed.

MATERIALS

- Collector body: CW617N.
- Knobs: ABS.
- O-ring: peroxide EPDM.
- Red/blue plate and insert: silk-screened aluminium.

TECHNICAL FEATURES

- Maximum static working pressure: 16 bar.
- Max fluid temperature: 110 °C.
- Fluid: water and water and glycol mixtures.



MANIFOLD is supplied in a single package to preserve the product during transport and storage.

Quality and reliability

Combi manifolds are delivered in a single package dedicated to each item to preserve the product during the transport and storage phases, avoiding contact with dust and oxygen.

Available versions

The COMBI manifolds are available with 2, 3 or 4 ports with 3/4" eurocone, 3/4" flat gasket connectors or 1/2" with G thread. The range is completed with a wide selection of adapters to meet all pipe requirements (multilayer, PEX or copper) up to 20 diameter.



EFFEBI
MADE IN ITALY

PLANET QUALITY



www.effebi.it

HALL 9.1 STAND E32

GIANNESCHI®
pumps and blowers

HALL 9
LEVEL 0 / BOOTH C62

COMPANY PROFILE

Since 1969 Gianneschi Pumps and Blowers produces a wide range of products for nautical sector. The company became famous worldwide and due to its success, they had to enlarge the factory space. Now the company has a surface of 8000 m² equipped with automatic machineries such as vertical storage, painting machine, laser cutting unit and welding machine.

A wide range of self-priming electric pumps

GIANNESCHI'S PRODUCTS ARE DESIGNED FOR NAUTICAL APPLICATION BUT ITS SELF-PRIMING ELECTRIC PUMPS WITH BRONZE BODY ARE SUITABLE ALSO FOR CIVIL AND INDUSTRIAL APPLICATIONS SUCH AS WATER PLANT CIRCULATION, POOL FITTING, COOLING SYSTEMS, WATER TREATMENT SYSTEMS AND FIRE-FIGHTING.

GIGETTA, the heart of Gianneschi's self-priming electric pumps, is made of two stage with dual impeller system. It allows combining the centrifugal impeller characteristics with the helical impeller, particularly indicated for priming purpose. The particular helical impeller profile designed to guarantee a very quick priming. In this way, it is possible to avoid all the external priming systems reducing installation and maintenance costs.

BMA FAMILY

BMA-S SERIES is a new range of electric pumps updated with new double volute design for faster and efficient self-priming capacity. Innovative body pump with a special design that allows easier air expulsion. Those pumps have several applications such as swimming pool filling, air conditioning, circulation and cooling systems. BMA-G and BMA-M SERIES was born from the development of the self-priming at double volute BMA-S series. BMA-G series pumps are suitable for handling of slightly loaded/grey water with small suspended solid having an open impeller and integrated anti-clogging system. BMA-M series are particularly suitable for handling of slightly loaded/black water with small-suspended solid and are made of open impeller combined with integrated macerator. Those models of pumps are suitable for use in waste water systems and heavy water systems.



1. GIGETTA. Self-priming electric pumps with double impeller technology

2. BMA SERIES. New updated range of self-priming electric pumps.

TF INOX®
Tank Fabrication Industry

HALL 9
LEVEL 0 / BOOTH C62

Water heaters and calorifiers in stainless steel AISI 316L

TF INOX PROPOSE A NEW GENERATION OF AUTOMATIC AND SEMI-AUTOMATIC MACHINES LIKE WATER HEATERS, CALORIFIERS AND PRESSURIZED STORAGE TANKS FOR HOT AND COLD WATER.

TF INOX, based in Camaiore- Tuscany, is a newly established company and has skill operators with more than 30 years of knowhow in the construction of water heaters, calorifiers, pressurized storage tanks for hot and cold water up to a capacity of 5000 liters and 10 bars working pressure. On request, TF INOX can also supply bigger capacity and different working pressures. All products are made with high quality austenitic stainless steel AISI 316L and after welding process are subject to internal and external passivation and pickling chemical treatment according to ASTM A 380/06.

WATER HEATERS

WH ML/E 300L hot water storage tank vertical type. Suitable for two electric 3 Ph heating elements 3 kW in Incoloy 800 and safety and temperature control thermostats. Insulation is no-condensate polyethylene 30 mm thickness and stainless steel metal sheet mirror glade cladding suitable for outdoor installation.

CALORIFIERS

CA P-EXC/E is a hot water production and storage tank with external stainless steel AISI 316L plate heat exchanger kit with circulator, pump, thermostat and connection pipe and fitting system. Complete with inspection flange suitable for one optional electric heating

element 5 kW in Incoloy 800 and temperature control thermostat. Insulation made in flexible polyurethane available in different thickness and PVC jacket. CA F-EXC/E is a hot water storage calorifier complete with internal fixed heat exchanger stainless steel AISI 316L with chemical treatments. The heat exchanger is a double-spiral pipes with a high heating capacity surface suitable for heat pumps. It is complete with inspection flange and is suitable for electric heating element with the function of anti-legionella temperature control and working cycle. The insulation is available in different materials and thickness and external finishing.



WH ML/E hot water storage tank capacity 300 l.



CA P-EXC/E is a vertical model of hot water storage calorifier.



TFINOX[®]

Tank Fabrication Industry

- WATER HEATER AND COLD/ HOT WATER STORAGE TANKS PRODUCTION
- TOP QUALITY AUTSTENITIC GRADE STAINLESS STEEL
- HIGH TECH PRODUCTION SOLUTIONS
- MORE THAN 30 YEARS KNOW HOW
- PICKLING AND PASSIVATION CHEMICAL TREATMENT
- CUSTOM COSTRUCTION UNDER SPECIFICATIONS



Via G. Pastore - Z.I. "Le Bocchette"
55041 Capezzano Pianore (LU), Italia
Tel. (+39) 0584 - 338238 - tecnico@tfinox.com





Heat pumps for renewable energy plants

FERROLI PROPOSES A RANGE OF HEAT PUMPS EASILY INTEGRABLE WITH DIFFERENT TYPES OF RENEWABLE ENERGY PLANT AND EASY TO BE INSTALLED.

The Ferrol Omnia H range of heat pumps has been designed to meet winter and summer air conditioning requirements for the most modern renewable energy systems. The wide range of power sizes available - from 4 to 16 kW (heating powers) - combined with the versatility of the system, allows working with very rigid outside temperatures (up to -20 °C) with sanitary hot water production up to 60 °C. The DC Inverter technology of the compressor helps to reduce starting currents, allowing to size supply network with smaller diameters and at the same time guarantees maximum efficiency in performance. The refrigeration circuit has been designed as a "split gas" type, allowing the end-user/installer to "forget" about the potential freezing risk for the external pipes once they have been laid.

How to facilitate installation?

The presence on the machine of a complete series of system accessories, such as the 3-way diverter valve, the temperature probe for the production of sanitary hot water through an external boiler and the external air temperature probe, simplify the initial "setup" of the installer, who does not need to request further additional accessories. In the same way, the indoor unit contains all the necessary components for the interface on the plant side: expansion vessel, system circulator, automatic air vent, water pressure gauge and pressure switch, and of the Y water filter (to be connected during the installation phase).

© ALL RIGHTS RESERVED

STANDARD REMOTE CONTROLLER

The remote controller, which we supply as standard with the product, can also be used as a room thermostat for single-zone systems and smartly manages eventual additional energy sources (e.g. boiler or electric resistance). This is particularly useful when activating the advanced "Fast ACS" function, which allows the sanitary hot water tank to be brought to the desired set point in the shortest possible time. The system also manages "anti-legionella" cycles that can be programmed in silenced night mode for the outdoor unit, thus reducing its acoustic impact. Finally, to allow choosing the most suitable combination for any specific type of system, two types of indoor units are available: with or without electric booster. In this way, we can choose a reduced average power of the external machine in conjunction with an internal unit with an integrated electric booster to satisfy the power peaks required by the system. All this makes Omnia H perfect for being integrated with the most various plant solutions. In addition, all system sizes boast the "ERP A++" energy class in heating mode.



ENRICO AMBROSI, Product Management Director of Ferrol SpA.

20



SIMPLE INSTALLATION, absence of flue and connections to the gas network, extreme silence and modularity of the outdoor unit allow an easy installation.



THE REMOTE CONTROL allows parameterizing the system with a simple click, intelligently managing all the available energy sources, time programming and climatic curves.

THE DESIGN and the silence of the internal unit of OMNIA H make it suitable for any type of environment.



Ferrolì

TOTAL COMFORT



Enjoy the pleasant sensation of comfort which just a complete product range like the one from Ferrolì can provide you.

www.ferrolì.com



HALL 12
LEVEL 0 / BOOTH C03

INNOVATION, DEVELOPMENT, WELL-BEING, FIXED POINTS IN THE CORDIVARI PRODUCTION PROCESS, ARE PECULIAR FEATURES ALSO IN THE NEW BOLLYTERM® HOME, CALORIFIERS WITH INTEGRATED HEAT PUMP, WHICH PRODUCES SANITARY HOT WATER BY EXPLOITING THE HEAT NATURALLY PRESENT IN THE AIR.

Research and development of new solutions tune in with the evolutionary trends of a market focused on efficiency and energy saving. BOLLYTERM HOME by Cordivari, with its A+ energy class, according to the 2009/125/CE Ecodesign directive, allows great energy savings of up to 75%, and therefore can absolutely be the right solution for a world that runs more and more toward energy savings and eco-sustainability. BOLLYTERM HOME will be available on the international market from the second half of 2019, after being presented in definitive form in March 2019 during the ISH fair in Frankfurt, leader event for the world of plumbing and heating, bathroom, building technics and renewable energy.

Advanced plant

Plants with heat pump generator are the most advanced applications in terms of functionality, savings and sustainability and at the same time, are designed for comfort and well-being. The Cordivari Company, in fact, is constantly engaged in the search of the best solutions for the most advanced plant design. In particular, BOLLYTERM HOME takes heat from the air, which is then yielded, thanks to the heat pump cycle, to the sanitary water through a condenser coil wrapped outside the storage boiler made of Polywarm®-coated steel. The external condenser avoids any possible contact between the heat pump gas and the sanitary water in case of accidental breakages; this solution guarantees maximum safety and hygiene. The system is managed by an electronic control unit, practical and easy to use, through which the water heater can be programmed. Thanks to the standard connections and the wall fixing system, it is possible to replace a conventional water heater with it, quickly and easily.

Eco-sustainable calorifiers with integrated heat pump



BOLLYTERM® HOME, the heat pump water heater, which produces domestic hot water using the heat naturally present in the air.



SCHEME on the airflows with ducting possibility.



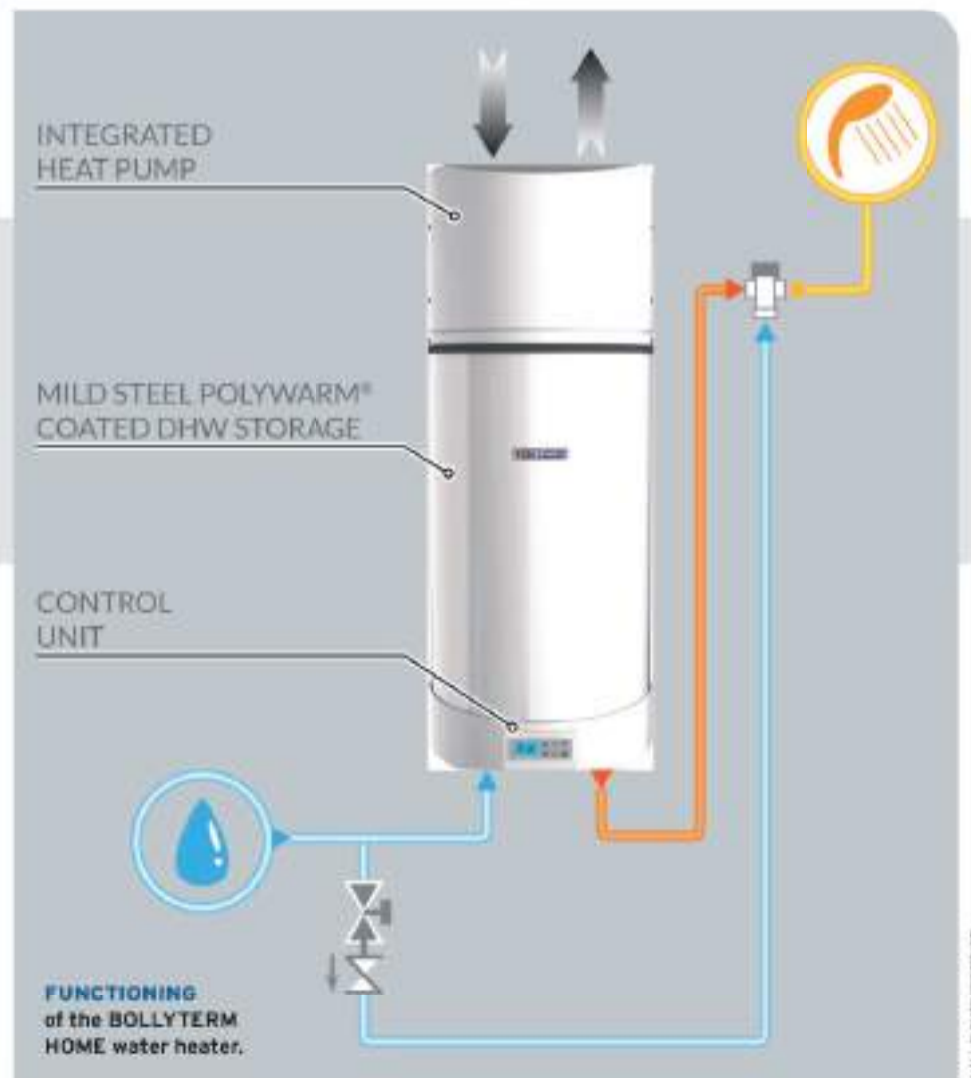
THE SYSTEM is equipped with an electronic control unit, practical and easy to use, through which the calorifier can be programmed.

TECHNICAL FEATURES

- Power of the heat pump 1 kW.
- Maximum pressure 10 bar.
- Maximum accumulation temperature 90 °C.
- Energy efficiency class A+.
- Control unit with Timer, BOOST and Anti-legionella function.

Boost function

The calorifiers BOLLYTERM HOME is available in two models, 80 and 110 lit, with an integrated heat pump with power of 1 kW. In addition to the daily and weekly programming of the operating modes and temperatures, it is equipped with a boost function that allows the sanitary water to be quickly put into operation in case of need. These, according to Cordivari philosophy, are the features that will transform the shower into a moment of serene relax.



FUNCTIONING of the BOLLYTERM HOME water heater.

© ALL RIGHTS RESERVED

STRATOS^{4s}

365
DAYS
OF
SUN



ISH
Frankfurt am Main
11. - 15. March 2019
Hall 12.0 Stand C03

Percorso
Efficienza  Innovazione

PATENTED

Sistema Stratos^{4s}: the most efficient compact solar thermal system.

The system Stratos^{4s} is an innovative compact high-efficiency solar thermal system with integrated DHW storage. It is equipped with a patented selfbalancing and anti-stagnation system. The Rotoshield patent protects the system and maximizes the performances. It is suitable for the production of domestic hot water in all climatic zones thanks to its ability to retain the captured heat. The system can in fact be installed in areas with temperatures up to -20°C.

Made in Italy | www.cordivari.com |     | 800 62 61 70



The historic SAIE fair doubles and starts again from Bari



SAIE, THE BIENNIAL EXHIBITION OF THE TECHNOLOGIES FOR BUILDING AND BUILT ENVIRONMENT 4.0 IN BOLOGNA (ITALY), DOUBLES ITS APPOINTMENT, ARRIVING FROM 24 TO 26 OCTOBER 2019 FOR THE FIRST TIME IN BARI, AT THE "NUOVA FIERA DEL LEVANTE" EXHIBITIONS AREA.



AN INNOVATIVE FORMAT

«The current transformations in the construction market - says Emilio Bianchi, Director of Senaf - require an innovative format, which focuses not only on products, technologies and services for buildings, but also services for the built environment. SAIE Bari was born expressively with the aim of offering to the operators in the sector the opportunity to display their products and compare with the other most important realities through the presentation of excellent case histories of the entire supply chain. We are happy to be able to be the showcase for the lively market of the Center and South of Italy».



EMILIO BIANCHI,
Director of
Senaf Srl, Italy.

24

Organized by Senaf, SAIE Bari is a professional event born with the aim of becoming the reference point for Central and Southern Italy and the Mediterranean basin thanks to the involvement of the main associations of the sector. An area, that of the Center and South of Italy, which registers more than 330 thousand companies active in building sector, equal to about 45% of the total at national level. Furthermore, according to the latest analysis by the ANCE, SVIMEZ and CRESME institutes, south of Italy attracts a good 83 billion investments destined to the construction of public works and about 44 billion from the EU funds, included in the 2014-2020 programme, and from the

resources allocated by the Development and Cohesion Fund. Many initiatives will animate SAIE Bari, all aimed at showing the excellence of the entire building supply chain, and through paths dedicated to the key themes of innovation, seismic safety, sustainability and digital

transformation. Through workshops and conferences that will provide training credits to professionals, demonstrations and practical tests, the event will give space to consolidated realities of the sector, showing the whole supply chain, from the project to the final realization of the product.

Excellence as protagonist

The fair, thanks to innovative exhibition formats and numerous special initiatives, will offer an integrated and modern vision of design with a great attention to the building site. The protagonist of SAIE Bari will be innovation, hub of the SAIE ECCELLENZE (SAIE EXCELLENCES) showcase, which will show the growth and innovation paths undertaken by companies, start-ups and international research centers. Four are the paths that visitors and companies will be able to discover:

1. Building Management and building requalification.
2. Technical plants for building.
3. Urban transformation, infrastructures and territory
4. Digitization and BIM.

Each path will address the most interesting topic for businesses and visitors. New built, restructuring, energy requalification, seismic upgrade, maintenance and new infrastructures and building automation will be therefore the main themes that will be treated during the Bari appointment. In particular, large space will be dedicated to innovations in the field of technical plants, especially to the potential of the integration of technical systems with construction processes.

© ALL RIGHTS RESERVED

THE HEALTHY BUILDING

The exhibition and demonstration path will allow the companies of plumbing, air conditioning, renewable energy and building automation to present their solutions in a context

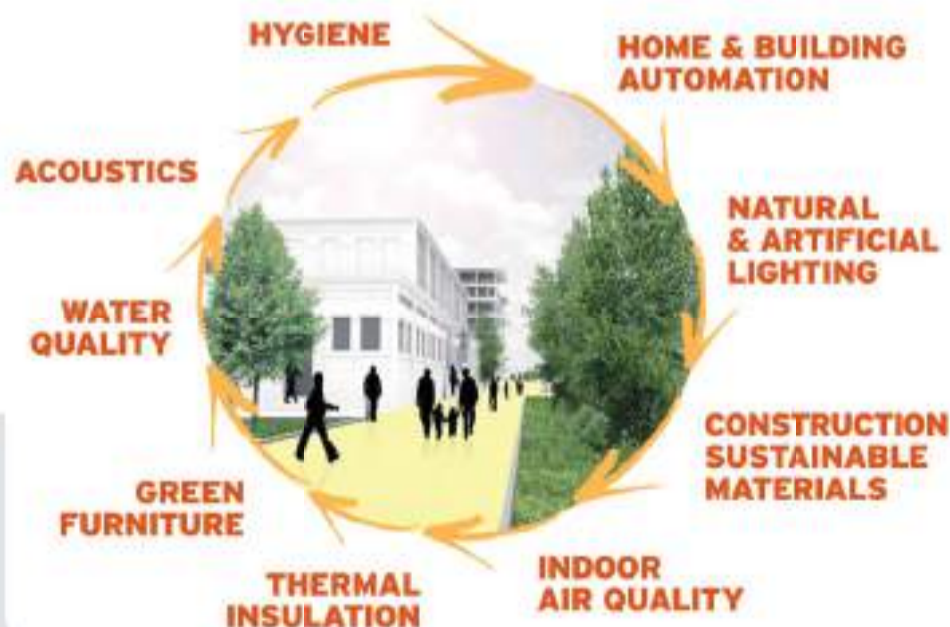
dedicated to building/plant integration. Just for this purpose, SAIE and Tecniche Nuove Holding have developed a project dedicated to the theme of Healthy Building to tell the trends

in progress, to deepen technologies, solutions and advanced systems that can improve

the building performance. The event in Bari will offer designers, companies, installers and technicians the

opportunity to tell their experience in the phases of design, construction and management of

heavy buildings in order to increase the comfort and well-being of those who live there.



Pressfit
Cembre

High performing range of hydraulic tools

HALL 4

LEVEL 2 / BOOTH B88

CONFIRMING A REPUTATION OF EXCELLENCE IN THE GLOBAL HVAC MARKET: PRESSFIT, A NEW BRAND OF CEMBRE SPA, EXPANDS ITS RANGE AT THE ISH FAIR.

PORTABLE
cordless-hydraulic
pump, battery
operated.



Building on experience gained in the design and production of hydraulic tools, Cembre created "Pressfit" in 2017, a new brand specifically dedicated to joints on piped pressure systems for water, gas, steam, waste and HVAC; a parallel market but with similarities to electrical plant engineering. Despite the recent release of Pressfit into the market, several of the

main producers in the plumbing and heating sector immediately recognised Pressfit as an ideal partner for the development of OEM solutions, utilising Cembre pumps, heads and hydraulic tools complementary to systems known throughout the world.

New tools range

The cordless tools are a new design, with weight, size and balance configured to yield great improvements in handling and convenience. The enhanced rigid structure of the bi-component plastic body provides greater mechanical protection whilst its rubber inserts boost operator safety and comfort. Quieter operation, illumination of the working area via LED lights and minimum vibration enhance the tool's practicality. Some of the tools within the range are equipped with intelligent automatic return at the end of the pressing cycle (Smart Release) and an OLED display provides essential real time operating data, including:

REMOTE
control with
OLED display
and LED
working lights.



- pressing force generated, verifying accordance with best practice;
- battery charge status;
- general operating information;
- the number of work cycles completed and remaining before recommended maintenance.

The internal memory card enables the user to store data from up to 200,000 pressing cycles for transfer to a computer via USB cable. In addition to the installation of equipment, a wide range of interchangeable jaws is available with the most common pressing profiles, all providing high durability due to the localised heat treatment of any area exposed to wear, and electrolytic zinc plating surface protection. Also released is an innovative-patented range of steel pressing chains dedicated to the distribution of fluids in industrial environments.

© ALL RIGHTS RESERVED

A WORLDWIDE COMPANY

Cembre (acronym of Costruzioni Elettromeccaniche Bresciane), was founded in Brescia in 1969; the Cembre Group is today world-renowned. The parent company based in Brescia has six subsidiaries: five commercial companies (two in Germany and one in France, Spain and the United States) and a production and commercial company (Cembre Ltd, based in Birmingham), with a group combined total of 747 employees. The Brescia-based company has been listed on the Italian Stock Exchange since 15 December 1997 and on the Star segment since 24 September 2001. The offices, factory, workshops and services of Cembre Spa comprise a 60,000 m² complex situated in an overall area of 121,000 m², where a rational organisation of space has achieved a comfortable, safe and efficient working environment.

PLUMBING



Pressfit

**Power
Reliability
Innovation**

ISH Hall 4.2 - Stand B88

Frankfurt am Main
11. - 15. 3. 2019

www.pressfit.com

TOOLS



Also in Italy is the moment of digital transformation

TO BE COMPETITIVE ITALIAN SANITARY AND HEATING WHOLESALERS MUST INVEST IN COMMUNICATION, MARKETING AND DIGITALIZATION, INCREASING THE LOYALTY OF THEIR CUSTOMER INSTALLERS THROUGH TECHNICAL, REGULATORY AND COMMERCIAL TRAINING.

The 20th Conference of ANGAISA - the Italian association representing wholesalers and retailers of the hydro-sanitary, air conditioning and bath furniture - gathered a crowded audience in the prestigious auditorium of the IULM University of Milan, focusing the spotlight on the Hydro-Thermo-Sanitary (HTS) world and underlining how a change of cultural attitude is necessary to keep up with the digital transformation. «We found - Enrico Celin, ANGAISA President, says - that there are difficulties in riding the change, suffering in the competition with the large distribution channel and e-commerce, in applying a multi-channel strategy and investments in communication and operational marketing are too modest. The digitalization of processes is a key factor today, wrongly experienced by companies in the sector, as a waivable

option, and short-term tactic is too often favoured, rather than drawing medium-long term strategies. All this leads to the risk of passively look at an involution of the supply chain».

The installer, from customer to "partner"

The opportunities for Hydro-Thermo-Sanitary distributors, highlighted by President Celin, mainly concern the industry 4.0, which is

the great opportunity to requalification of the offer by enhancing the technological evolution of the product. Furthermore, the preparation and professionalism of the installer will be increasingly



FAR RUBINETTERIE

WWW.FAR.EU

Piston valves for fan coils



FAR OFFERS ITS NEW RANGE OF PISTON VALVES, TO DIVERT OR MIX THE FAN COILS FLUIDS.

HALL 9
LEVEL 1 / BOOTH B32

FAR regulating valves for 2, 3 or 4-way fan coils are used, depending on the version, to intercept, divert or mix the supply and return heat transfer fluid in heating and cooling systems. The valves are designed for the installation of a 2 or 4-wired thermo-electric actuator, that controls the shutter. Depending on the starting position (NC or NO position) the flow is diverted in one or in the other direction. In case of closing of the shutter of 3 or 4-way valves on the supply line, the flow is completely diverted into by-pass. The 4-way version also includes the swiveling by-pass tee. These kinds of valves are ideal for the installation on fan coils,



2, 3 AND 4-WAY piston valves for fan coil systems.

as their small sizes allow easier mounting inside the external cover.

All versions are available with 2 and 3 male connections in 1/2" - 3/4" - 1" sizes, while the 4-way version with by-pass is available in 1/2" and 3/4" sizes.

© ALL RIGHTS RESERVED



2, 3 AND 4-WAY PISTON VALVES FOR FAN COIL SYSTEMS



NEW 2019

- Regulating valves for fan coils which intercept, divert or mix the heat transfer fluid
- For heating and cooling systems
- Designed for thermo-electric actuator
- Ideal for installation on fan coils thanks to their small size
- Available with MALE connection:
 - 2 and 3-way in 1/2", 3/4" and 1" sizes
 - 4-way in 1/2" and 3/4" sizes

Visit us at ISH - March 11-15 2019:
ISH Frankfurt - Hall 9.1 - Stand B32

www.far.eu
f i y

SUSTAINABLE TECHNOLOGY TO SAVE THE PLANET

Luca Mercalli, President of the Italian Meteorological Society, also took part to the conference, focusing on the importance of investing in efficient technologies for products that are less and less impactful on the environment. «We have moved to the Anthropocene era, where life and human

consumption impact on the planet, unlike the Holocene. The Earth has a limited stock of resources and today, with our lifestyle, we are using 1.7 Planets. To avoid collapse and return to sustainability conditions we can help by developing increasingly green and less impactful technologies, but

also by limiting population growth and consumption. Today, overheating has reached 1 degree, but if we do not do anything, by the end of the century we risk having a temperature increase of up to 5 degrees higher compared to the pre-industrial historical period: a real catastrophe».

fundamental in knowing how to operate efficiently and with the new technologies. «The Hydro-Thermo-Sanitary distributors must recognize that the installer will inevitably become from customer to real partner, so that education, through technical, regulatory, commercial and management training, will be a fundamental loyalty tool. A change of cultural attitude is needed to keep up with the digital transformation. In particular, for the small HTS Distribution companies it is necessary to invest in communication, marketing and process digitization. And we strongly believe in the collaboration with production since HTS monitors

are very important thanks to the availability of aggregate data and product trends».

From a solid to a liquid society

According to Alberto Bubbio, Senior Professor of Business Economics at the University Cattaneo LIUC at Castellanza (Italy), there are several changes in the market before which the HTS distributor cannot be caught unprepared: the digital transformation and the consumer transformation. «The solid society is made up of producers which choose what to put on the market, but today we have switched to a consumer society, therefore liquid. Only those who will listen

to the customer needs and will be able to satisfy them, will do it. Today, one of the problems of distributors is the installer; even he must realize that this society is made up of many ladies Mary Google who have overturned the market paradigms». In fact, from B2B (Business to Business) and B2C (Business to Consumer) we moved to a C2B (Customer to Business) situation. To face up to the current micro-fragmentation of the demand, we can no longer ignore the digital, where the web is not a tool to sell, but to make ourselves known and bring the customer to the point of sale. To reach new customers today there is the need for a digital strategy, in which the target is not only to have loyal and profiled customers, but also numerous "True Fans" who act driven by the old word of mouth that in the social media has become the feedback to the globality».

From e-commerce to omnichannel

Today there are several channels and sales points serving consumers' shopping paths. Luca Pellegrini, Dean of the Communication Faculty of the IULM University, explained the new business models that go from e-commerce to

omnichannel, thus the overall redefinition of the offer system, based on a coherent set of physical and virtual contact points to build and manage the customer relationships. «There is a great change taking place and omnichannel is pushing towards closed distribution systems, divided into single-brand stores, that are self-sufficient and not subject to the price competition on the Net, and multi-brand ecosystems with private label and shop-in-shops concessions to avoid competition of price with the on-line offer». We also found the Professor's thinking very interesting about the distribution-installation relationship: «We should give value to the partnership with the installers. For example, transforming them into our own real resellers with loyalty tools, as in the model of industrial resale, set up clubs where the best and most loyal become privileged partners with further discount/rewards and training. Furthermore, it would be advisable to provide services to the end customer sold by installers as consumer credit, insurance, prompt intervention and to include support in the visit to the customer for the design of the intervention».

© ALL RIGHTS RESERVED

G. GIOANOLA
WWW.GIOANOLA.IT

Water meter with wireless radio module

THE COMPANY G. GIOANOLA OFFERS A WIDE RANGE OF SOLUTIONS FOR HEAT METERING AND MID APPROVED HOT AND COLD WATER. THESE INCLUDE THE SUPERDRY 8-WMB-METER WIRELESS M-BUS RADIO MODULE OMS.

Part of the range offered by G. Gioanola are the 8-WMB Superdry meters, which feature an adjustable 360 °C rotating dry dial, reading on 8 digit rollers, approved according to the MID 2004/22/EC Directive, pulsed output or only pre-setting for radio module with frequency 868 Mhz OMS-mode TI-AES 128 and also conforming to the Wireless communication protocol MBus EN 13757-4 for the remote consumption reading. Temperature class T30 and T90, permanent flow rate 2.5 or 4 m³/h, Connections 1/2" or 3/4".

- Models:
- USF-USC-8-WMB/15 Q3 2.5 R80 or R100-Threads 3/4 (with M-Bus



G. GIOANOLA

HALL 9
LEVEL 1 / BOOTH A53



8-WMB SUPERDRY METERS. 360° rotating counter for easy reading dry dial.

wireless Radio Module);
• USF-USC-8-WMB/20 Q3 4 R80 or R100-Threads 1";

- With M-Bus wireless Radio Module. In addition to the product for heat metering, G.Gioanola provides a full range of MID approved meters for cold and hot water, with exceptional performance, as always ensuring the highest reliability in the measurement of water. These important results have been achieved thanks to continuous investment in research and development of new components and thanks to the complete realization in Italy.

© ALL RIGHTS RESERVED

RELIABLE MEASURING

MADE IN ITALY



SMART METERING pre-equipped for 868Mhz wireless radio module

THERMAL ENERGY CALCULATION



G. GIOANOLA
SISMA water meters

Str. Alessandria, 50 - 14049 Nizza Monf.to (AT) ITALY
Tel. 0141.793536 - Fax 0141.702757
e-mail: info@gioanola.it - http://www.gioanola.it

COMPANY WITH
QUALITY SYSTEM
CERTIFIED BY DNV GL
= ISO 9001 =

Stop to high GWP refrigerants

THE TRANSITION TO LOW ENVIRONMENTAL IMPACT F-GAS IS TOO SLOW AND IS CAUSING MANY PROBLEMS IN THE REFRIGERATION AND AIR CONDITIONING SECTORS. WE SPOKE ABOUT IT WITH ANDREA VOIGT, GENERAL DIRECTOR OF EPEE.

Why abandon high-GWP refrigerants? Addressed to operators across Europe, the joint appeal "Do not install more R-404A/R-507A!" recently published by AREA (Air conditioning and Refrigeration European Association), ASERCOM (Association of European Refrigeration Component Manufacturers), EFCTC (European Fluorocarbons Technical Committee) and EPEE (European Partnership for Energy and the Environment). The image of the giraffes that risk to be submerged - only the one with the longest neck, which "sees farther", seems to be able to save itself - was chosen precisely to hit the imagination of a category, that of thermo-hydraulic installers and refrigerators operators, called to play a decisive role for a change oriented towards environmental sustainability.

The phase-down has started

Starting from 2018 the EU 517/2014 European Regulation has imposed a substantial cut of the F-Gas quantities available on the Community market. The phase-down of HFCs, the process of reducing the use of F-Gases with higher GWP, is based on a system of shares expressed in CO₂ equivalent. R-404A and R-507A respectively feature GWP values of 3780 and 3900 are therefore already subject to phase-down. Further restrictions will be applied in 2020: for HFCs the maximum limit of GWP (Global Warming Potential, a value that expresses the contribution to the greenhouse effect of F-Gases relative to the effect of CO₂) will in fact be mandatorily less than or equal to 2500. The phase-down, instead, does not affect pure HFCs, CO₂, hydrocarbons and ammonia, nor recycled or regenerated HFCs (it is the only exception; they can be used for



28

FRANKLIN ELECTRIC
FRANKLINWATER.EU

THE BEST SOLUTION FOR BUILDING SERVICES

FN SERIES
THE NEW END SUCTION
EN733 PUMPS

ISH Frankfurt am Main
11.-15. 3. 2019

VISIT US AT
Hall 9.0 D72

WATER.
ENERGY.
LIFE.



OF MOVING
FORWARD

E-Tech

Franklin Electric

franklinwater.eu

Centrifugal pumps with axial suction

The FN Series of Franklin Electric is designed and built entirely in Italy using cutting-edge technology in terms of quality and efficiency. The new centrifugal pumps with axial suction, in accordance with EN733 regulation, are completely built in cast iron coated with anti-corrosive substances. The impeller is painted with a cathaphoresis coating to avoid any rust



Franklin Electric

HALL 9
LEVEL 0 / BOOTH D72

possibility, the motors are all available according to the highest standards of efficiency and the product is available in numerous configurations in terms of compatibility of liquids and motors. The FN Series is

available in three configurations:

- FNC monoblock version with elongated shaft;
- FNS monoblock with rigid joint and commercial motor;
- FNE bare-shaft version.

The FNC model guarantees performance up to 180 m³/h of flow and 90 m of head with powers up to 22 kW, while

FRANKLIN ELECTRIC LEAVES A NEW FOOTPRINT ON THE CENTRIFUGAL PUMPS MARKET WITH THE INNOVATIVE FN SERIES AXIAL SUCTION RANGE, EN733 COMPLIANT.

the FNS and FNE models can reach 240 m³/h of flow and 100 m of head with power up to 75 kW. The standard version is available for working with water from -20 °C up to 90 °C, but with appropriate modifications to the elastomers and mechanical seals, it is possible to reach high temperatures up to 120 °C.

© ALL RIGHTS RESERVED



FN SERIES, new range of centrifugal pumps EN733 standardized.



ANDREA VOIGT,
General Director of EPEE

F-GAS AND SAFETY

In general, as the GWP decreases, the flammability of F-Gas increases, the classification of which includes 4 categories:

- non-flammable (A1);
- mildly flammable (A2L);
- flammable (A2);
- highly flammable (A3).

In terms of safety, it is more appropriate to refer to the Lower Flammability Limit

(LFL, expressed in g/m³) of the refrigerant. For example: the R-290 gas, classified in A3 category, has an LFL almost 8 times lower than a gas in the A2L category. Another aspect to be carefully assessed is linked to the flame propagation speed which, for the refrigerants in the A2L category, is significantly lower than those in the A3

category. In practice, this means that a much higher volume of F-gas classified as A2L can be used compared to the quantity of A3 classified F-gas. The control of the standards, technical norms and instructions of the manufacturers is therefore of extreme importance for the safety in the use of low GWP HFCs.

CO₂-equivalents, i.e. not refrigerant specific but calculated by multiplying quantity (kg) with GWP, all sectors will suffer if one sector does not move fast enough, leading to scarcity of refrigerants and high prices».

Market consequences of high GWP HCFs

«We should be aware that at the end of the day, life in our society is not possible without heating, cooling and refrigeration. It's about keeping our food fresh, our health, our productivity, our data and much more. So, if we fail to make the phase-down work, we jeopardize our entire way of living, because HVACR equipment will simply stop working if there is no refrigerant available any more to operate it. I don't want to dramatize the situation, but sometimes it's necessary to shake up people - and this includes by the way also the end-users who actually play an important role - who fail to see the consequences of inertia» concludes Director Voigt. Therefore, this is not only an environmental issue, but also a precise choice of field by the sector operators that aspire to remain competitive, starting immediately to install more sustainable F-gases, the use of which is assured for many years to come, on the contrary of what will happen shortly for R-404A and R-507A.

assistance until 2030). Already from this year the effects of the strong reduction in the availability of HFCs start to be felt. «A regular survey carried out by Ökorecherche on behalf of the European Commission - says Andrea Voigt, General Director of EPEE - shows that the price of R-404A has increased by a factor of 10 roughly speaking since the beginning of 2017, R-410A has increased by a factor of around 5 and R-134a has more than tripled. These dramatic developments are certainly at least partly linked to the fact that the market has not moved away quickly enough from R-404A and R-507A. As already explained above: if a large share of

the available quota is consumed due to the on-going use of very high GWP refrigerants, all the others will suffer». It is a simple mechanism: the higher the GWP of an F-Gas is, the higher the amount of CO₂ equivalent represented by 1 kg of refrigerant is too, the more it will be affected by the phase-down process of the HFCs and more consistent its price increase will be and the possibility of shortage. As a result, if there will be no decrease in the use of R-404A and R-507A, this trend is clearly destined to continue. In addition to the increase in price, there is also the risk of an immediate scarcity of refrigerants, which will also involve the other F-Gases.

Urgent changing

«Commercial refrigeration has been identified as a key sector for action due to the predominant use of R-404A and R-507A, both refrigerants with a very high GWP - Andrea adds -. However, the surveys during our reality check revealed that R-404A and R-507A are still being broadly used and that change - whether in new or existing equipment - is far too slow. For that reason, we decided, together with AREA, ASERCOM and EFCTC, to focus our first priority action on the urgent call to stop installing R-404A/R-507A. Indeed, as the phase-down is a flexible mechanism that is based on

© ALL RIGHTS RESERVED

PROGRESS PROFILES

WWW.PROGRESSPROFILES.COM

Aesthetics and functionality for the floor-flush shower



PROGRESS PROFILES PROPOSES A PRACTICAL AND ELEGANT OUTFLOW SYSTEM FOR FLOOR-FLUSH SHOWERS.

The floor-flush shower is the most current trend in the world of bathroom furniture and is a choice that offers numerous advantages. The Proshower System, patented by the Veneto based company Progress Profiles for the correct outflow of water, is easy to install and it consist of several elements. The waterproof panel with slope Proshower Panel, applied before the tiles in showers with Linear drain, guarantees the perfect inclination. Proshower Panel Central, instead, is a plate made up of two panels that can be connected to each other, with a central hole for positioning the Proshower Drain Vertical or Linear drainage systems. The Proshower Base Drain shower channels - in stainless steel - or Eco in polypropylene -, are available in various lengths and have a drain with a 360° swivelling siphon and



PROSHOWER SYSTEM guarantees a perfect result, in an easily and quickly way.

removable head flanges to connect two or more channels. Five different stainless steel finish grilles customize the shower tray or, for a more elegant result, it is possible to tile the grill with the same floor covering. For the perimeter of the floor, the Proshower Profile profile protects the edges of the floors and decorates the visible part of the screed, Proshower Profile Glass is suitable for fixing/supporting the protective glass; Proshower Profile Wall and Front are ideal for decorating the visible part of the wall next to/in front of the shower tray.

© ALL RIGHTS RESERVED



PROSHOWER SYSTEM

PROSHOWER SYSTEM is an innovative solution, which combines flexibility, functionality and design to answer to all requirements of the floor-level shower. Heart of the system is the PROSHOWER drain, that in only 85 mm at floor-level has multiple advantages.

Flow: it is one of the few drains on the market with a 360° rotating siphon with patented watertightness junction which guarantees a 30 lt/min flow.

Hygiene: the system has an inside slope for the outflow of the water towards the drain to avoid unpleasant smells; the siphon is easy to open and clean.

Durability: it is the only drain treated with electro-polishing and passivation that guarantee an exceptional resistance in all environments (over 2000 hours test in saline mist).

Modularity: it is the only modular drain; the drains can be assembled in sequence till the desired length.



THE HOUSE OF THE FUTURE - AND SOMETIMES EVEN OF THE PRESENT - IS "SMART": A HOME EQUIPPED WITH SYSTEMS AND DEVICES USEFUL TO SIMPLIFY THE DOMESTIC LIFE AND SO CONNECTED, AUTOMATED, SAFE AND, POSSIBLY, USER-FRIENDLY.

Smart home, a positive trend for Italian market

Everyone talks about it, many would like to have it, and some have already tried but not always successfully. On the one hand, industry already proposes systems and products able to equip the home with a series of features able to automate repetitive processes, to control and monitor the operation of certain building components, plants and household appliances, to optimize the production and energy consumption. From the other hand there are the users-consumers, generally more and more intrigued about the potentials offered by systems as well as the individual devices - some of which can improve the quality of life of particular subjects such as seniors and disabled - but for scepticism, fears about privacy or little knowledge of the matter encounter difficulties in the decision. In the middle there are technicians, distributors and installers, to whom it is often entrusted not only the burden of understanding the requests and identify and propose possible solutions, but also to keep pace with the increasingly rapid technological evolution.



30

Smart solutions.
FOR LIFE.

ISH 11-15 March 2019
Hall 9.0, Booth D42

**PENTAIR
STA-RITE**



Digital PT8 digital pressure switch
Dominator 4 submersible pump
Multi EVO-E pump with inverter

PENTAIR STA-RITE
WWW.STARITE.IT

Digital pressure switch



HALL 9
LEVEL 0 / BOOTH D42

PENTAIR STA-RITE PROPOSES DIGITAL PT8, AN ELECTRONIC PRESSURE SWITCH WITH AN INTEGRATED DIGITAL PRESSURE GAUGE.



DIGITAL PT8 the new digital pressure switch.

The electronic pressure switch DIGITAL PT8 can manage the start and stop of single-phase electric pumps up to 2,2 kW. Cut-in and cut-out pressure implementation can be set easily and accurately through an user friendly control panel. It can operate as a differential pressure switch, as an inverted pressure switch, or just with maximum or minimum pressures.

Main features:

- Alarm in case of low air pressure inside the tank (considering high number of pump start and stop).
- Dry running and motor overheating protection.
- Function ART (Automatic Reset Test): when the device is disconnected due to dry running it has been conceived to be able to automatically try to reconnect until water is back in the system.

Technical features

Rated current	30 (16) A
Max. input power	2,2 kW (3 HP)
Protection class	IP55
Starting pressure	0,5 - 7 bar
Stopping pressure	1 - 8 bar
Max. differential pressure	7,5 bar
Connection port	1/4" F

DIGITAL PT8 includes also instantaneous current lecture, it controls and manages the overcurrent, the dry running of the pump and the fast cycling protection.

© ALL RIGHTS RESERVED

IN ITALY, the smart home market is in a phase of very strong growth: +35% in 2017 (excluding wired home automation and entertainment systems), for a total value of around 250 million euro.



SOURCE: INTERNET OF THINGS OBSERVATORY OF THE SCHOOL OF MANAGEMENT OF THE POLYTECHNIC UNIVERSITY OF MILAN.

THE ROLE OF INSTALLERS

The role of professionals and installers is crucial, since hardly the user-consumer has not only the necessary knowledge to be able to make a conscious choice, but most of the essential technical

skill for the installation and programming. Unfortunately, the national supply chain - I refer also to designers, distributors and construction and craft companies, etc. - is proving still a bit too conservative towards a market that, despite everything, in Italy is recording significant growth. The data in our possession indicate a +35% in

2017, with a total value of around 250 million euro, with even higher percentages and values in 2018. From the research carried out by asking the opinion of the operators, the interest in the smart home is very bland: generally, the awareness about their lack of knowledge of the topic prevails and only few believe the sector a concrete

business opportunity. It is a very common condition, especially among multi-brand operators, while the mono-brand installers - presumably for the effect of the more direct relations with a single supplier, which often include also targeted information and training - are generally more sensitive and prepared on the topic.



ENG. GIULIO SALVADORI, Polytechnic University of Milan.

Target interoperability

We deepened the topic with Eng. Giulio Salvadori - Director of the Digital Innovation Observatories of the School of Management at the Polytechnic University of Milan - starting from the surge in communication aimed at promoting the so-called "intelligent loudspeakers", recorded in recent times. «These are devices controlled by the user through voice commands, which allow listening to music, controlling video playback, receiving news, etc. They can also be integrated with predisposed home appliances and with some systems for the home automation, for example

for the control of artificial lighting. It's an important step forward - which extends the possibilities of managing other smart devices in the home, so far limited to touch screens, tablets and smartphones - but which is only part of the much larger and more complex field of the smart home».

Towards greater integration

«The management of air-conditioning and electrical systems, including lighting, and therefore of the terminals and of the home appliances is, with no doubt, one of the best suited areas to integration, with the

double purpose of better comfort and energy savings. Much has already been done and could become a driver in view of the goal of full interoperability in this area. It is the same for the home entertainment, another area with respect to which consumers are showing very interest. Different, however, is the speech about the home security sector which, for its finalities maintains its own relative independence».

Professionals upgrade

As often happens, in order that the market could understand the innovation, training and upgrade are indispensable. «It is so, but

we must not forget another important factor: the age. In general, younger workers have a more open attitude towards technology and show a greater ease in understanding potentials and problems. I personally think that manufacturers should consider more carefully the actual possibility, by their customers, to be able to install and use the products in complete autonomy. On the contrary, an approach that includes the sale of the product in combination to the intervention of a professional installer would probably be more effective in orienting the user-consumer's decisions in a positive way».

© ALL RIGHTS RESERVED

F.A.R.G.

WWW.FARG.IT

Ball-operated float valve

F.A.R.G. PROPOSES MULTIPLE VARIATIONS OF ITS SILENT AND INVULNERABLE TO VIBRATIONS FLOAT VALVE.

F.A.R.G.

HALL 9
LEVEL 1 / BOOTH E67

Icon of the production of F.A.R.G. is the float valve that the company proposes in twenty models, both for domestic and industrial use, each with multiple variations to offer the customer different possibilities, according to the system. Among these, Globus 525 stands out. Patented feature of this model is the ball operating, which guarantees a silent working and a complete invulnerability to vibrations. On the body, a nickel-plating surface treatment has been made.

The chrome-plated ball and PTFE seats ensure the seal, while a filter inserted in the valve inlet avoids that impurities compromise it. The new quick-fit connection system with two positions simplifies installation and maintenance operations. The valve is complete of a plastic loading tube that reduces the noise caused by the fall of water in the collecting tank. The recommended maximum operating pressure is 12 bar and the maximum recommended water temperature is 80 °C. Materials: CW617N UNI EN 12165 - CW614N UNI EN 12164 - EPDM - PTFE - AISI 304-AISI 430 - PVC.

© ALL RIGHTS RESERVED

GLOBUS 525 with ball operation includes a loading tube with flat rod and a quick-fit connection.



F.A.R.G.

WATERCONTROL

made in Italy, made in F.A.R.G.

Come visit us!



ISH

Frankfurt am Main
11. - 15. 3. 2019
(NEW: Monday - Friday)

Hall 9.1 E67



F.A.R.G. srl Via C. Battisti, 77 - 28045 Invorio (Novara) - Italy
T. +39 0322 255193 - F. +39 0322 259487 - info@farg.it - www.farg.it

Thanks to all companies that have joined our initiative



**Italian
innovation**

Heating Air conditioning Plumbing

This issue is also available in digital format at

www.ilgiornaledeltermoidraulico.it

www.rcinews.it



GT

il Giornale del termoidraulico

RCI

RISCALDAMENTO
CLIMATIZZAZIONE
IDRONICA

